

KITCHEN 2-BURNER GAS TOP VERSION

Project
Rev.:
Zone:
Location:



CODICE
CR1015409

MODELLO
Q90PC/G4001

SERIE
QUEEN 9

GENERAL CHARACTERISTICS

It is the choice of those who need maximum strength and power. Queen9 is distinguished by its 900 mm depth, a 20/10-thick work surface, double-crown burners, and the use of elegant stainless steel with a Scotch Brite finish.

Details that not only offer maximum functionality and aesthetics, but also take into account the practical and ergonomic needs of those who work.

The extreme freedom of composition allows top models to be combined with accessorizable oven and neutral base units, even with hygienic finishes.

With more than 350 models immediately available in the catalog, Queen9 is already ready to start giving its best.

In addition, all equipment that makes up a Queen9 kitchen is certified in compliance with international standards, including CE, GAR, AGA and others.



TECHNICAL SPECIFICATIONS

Entirely moulded top made from thick stainless steel plate.

Enamelled cast-iron grills with long spokes for easy movement of pans between fires.

Optional stainless rod grates available.

High power cast-iron burners (3.5- 5.7- 7 and 10 kW). Piezoelectric ignition of burners available as an option.

Removable stainless steel bi-fire bowl accessory.

Enamelled cast-iron grills with long spokes for easy movement of pans between fires.

High power cast iron burners 3.5- 5.7- 7 and 10 kW.

Protected pilot flame with removable and easily washable protection.

Thanks to the jet-proofing certification (IPX5) obtained through specific tests, knobs and under-knobs can be washed at the end of the working day without compromising functionality and safety.

The front bar is a comfortable foothold for the cook; it keeps a safe distance from the worktop and thus protects against accidental collisions with what is resting on the worktops and at the same time the handles.

KITCHEN 2-BURNER GAS TOP VERSION

Project
Rev.:
Zone:
Location:



CODICE
CR1015409

MODELLO
Q90PC/G4001

SERIE
QUEEN 9

Technical Information

SPECIFICATION	DATA
MATERIAL	CR1015409
DEFINITION	Q90PC/G4001 2 FUOCHI GAS TOP
COMMERCIAL LINE	QUEEN
SUPPLY	GAS
DIM. WIDTH	400 mm
DIM. PRODUCTIVITY	900 mm
DIM. HEIGHT	250 mm
NET WEIGHT	37 Kg
VOLUME (net)	0.09
PACKAGE LENGTH	440 mm
PACKAGE WIDTH	1020 mm
PACKAGING HEIGHT	550 mm
PACKAGE VOLUME	0,248 m3
GROSS PACKING WEIGHT	45 Kg
GAS POWER	10.5
GAS POWER (G25.3/25mbar)	10,50
GAS/REFRIGERANT TYPE	METANO "H, E" G20 20/25mbar
N. FIRES/PLATES	DUE FUOCHI
CERTIFIED MODEL	Q90PC/G4001

KITCHEN 2-BURNER GAS TOP VERSION

Project
 Rev.:
 Zone:
 Location:

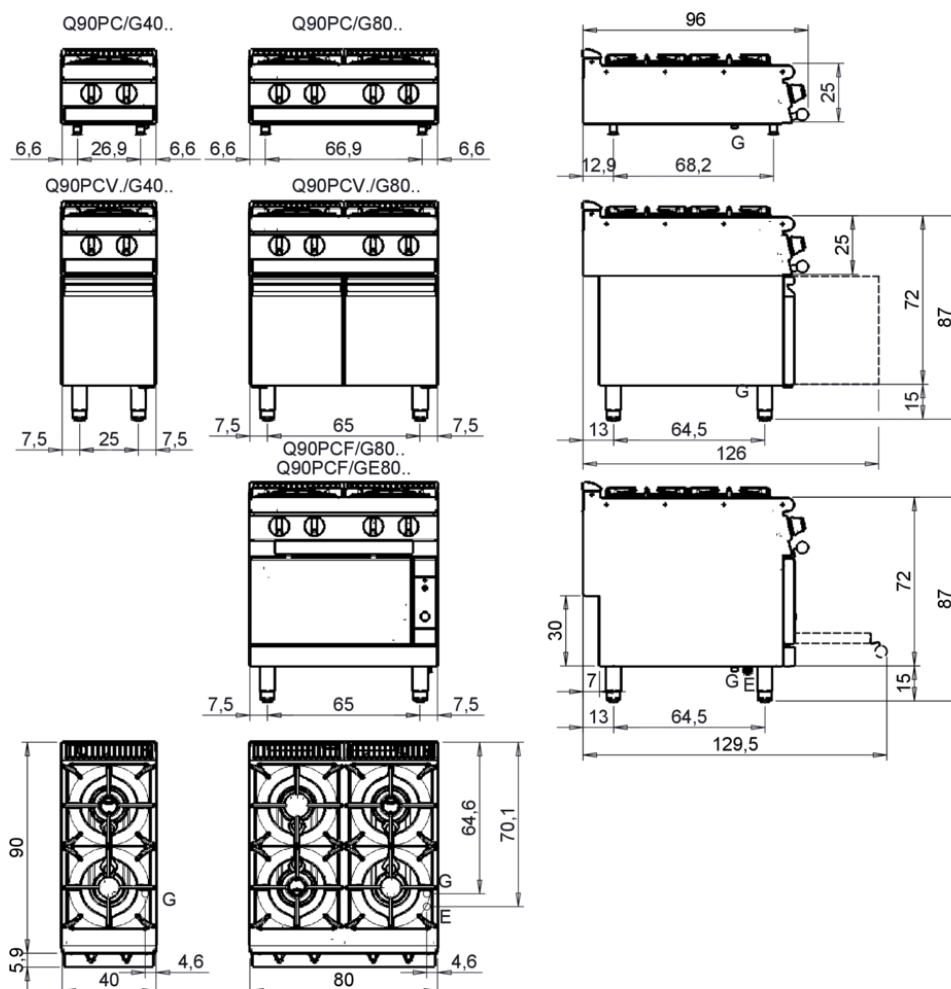


CODICE
CR1015409

MODELLO
Q90PC/G4001

SERIE
QUEEN 9

MISURE IN cm - DIMENSIONS IN cm - ABMESSUNGEN IN cm - MESURES EN cm
 MEDIDAS EN cm - MATEN IN cm - DIMENSIONES EN cm



Legenda - Legende - Key - Légende - Leyenda - Legenda - Legenda

E	Pressacavo entrata linea elettrica - Stopfbuchse - Electric cable stress relief - Presse étoupe de câble él - Pisacable - Elektrische kabelwartel - Entrada cabo eléctrico	G	Arrivo gas - Gasanschluss - Gas connection - Arrivée gaz - Union de gas - Gasaansluiting - Ligaçào gás EN 10226-1 R 1/2; EN ISO 228-1 G 1/2 (DK)
S	Attacco scarico acqua - Wasserablauf - Water outlet - Vidange de l'eau - Desaguadero - Wateraftapaansluiting - Junção descarga água	H20	Arrivo acqua - Wasseranschluss - Water inlet - Arrivée eau - Union de agua - Wateraansluiting - Junção alimentação água
S1	Scarico vasca - Wannenabflussrohr - Pan outlet - Vidange du bac - Descarga cuba - Water toevoer - Descarga da cuba	A1 =	Calda - Heiss - Warm - Chaude - Caliente - Warm - Morno
S2	Valvola di depressione - Anti-depression valve - Unterdruck ventil - Soupape de dépression - Válvula de depresión - Onderdrukklep - Válvula de depressão	A2 =	Fredda - Kalt - Cold - Froid - Fria - Koude - Frio
S3	Scarico acqua intercapedine - Wasserablauf Zwischenraum - Jacket water drain Evacuation eau double envelope - Descarga de agua intersticios - Afvoer water tussenruimte - Descarga de água na marmita com Sistema de aquecimento indirecto	L	Rubinetto di livello - Level tap - Wasserhahn - Robinet de niveau - Grifo de nivel - Niveaakraan - Torneira de nivel
S4	Scarico - Abflussrohr - Drain - Tuyau d'évacuation - Tubo de drenaje - Aftapbuis - Tubulação de dreno		

KITCHEN 2-BURNER GAS TOP VERSION

Project
Rev.:
Zone:
Location:



CODICE
CR1015409

MODELLO
Q90PC/G4001

SERIE
QUEEN 9

PRODUCT'S RANGE PLUS



Protected pilot flame with removable and easily washable protection.



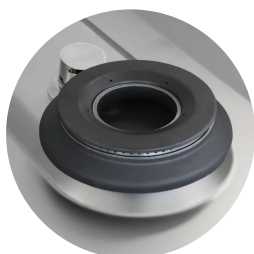
Self-cleaning version with liquid drain hole, electric ignition and flat connection kit AVAILABLE ON REQUEST



Entirely moulded top made from thick stainless steel plate.



Enamelled cast-iron grills with long spokes for easy movement of pans between fires.



High power cast iron burners 3.5-5.7- 7 and 10 kW.

KITCHEN 2-BURNER GAS TOP VERSION

Project
Rev.:
Zone:
Location:



CODICE
CR1015409

MODELLO
Q90PC/G4001

SERIE
QUEEN 9

ACCESSORIES

CODE	MODELLO	DESCRIZIONE
BN418031910030	PRL	Radiant plate for 1 fire
BN418031910040	PRR	Radiant plate for 1 fire
BN418031920020	9GF	GN2/1 chrome oven rack
BN418031910180	N9BA	Removable bowl for 2 burners
CR1353959	CR1353959	Stainless rod bi-fire grate
BN41C1500086	ACC2FP	Electric ignition
BN41C1500087	ACC4FP	Electric ignition
BN41C1700144	ACC6FP	Electric ignition
AES-2F	AES-2F	Surcharge for version with self-cleaning top - optional to be requested when ordering
AES-4F	AES-4F	Surcharge for version with self-cleaning top - optional to be requested when ordering
AES-6F	AES-6F	Surcharge for version with self-cleaning top - optional to be requested when ordering
AES-8F	AES-8F	Surcharge for version with self-cleaning top - optional to be requested when ordering
CR1018839	QP12	DOOR FOR BASE L 400
CR1357199	Q90TVT2	CLOSING PANELS
ZA20	ZA20	FRONT PLINTH
CR0592770	ZA40	FRONT PLINTH
CR0592780	ZA60	FRONT PLINTH
CR0592790	ZA80	FRONT PLINTH
CR0592800	ZA120	FRONT PLINTH
CR0592810	ZA160	FRONT PLINTH
CR0592710	ZA200	FRONT PLINTH
CR0592720	ZA240	FRONT PLINTH
CR0982789	ZL90	900 SERIES SIDE PLINTH
CR0985539	ZL70	700 SERIES SIDE PLINTH